

PROPOSED ADDITION

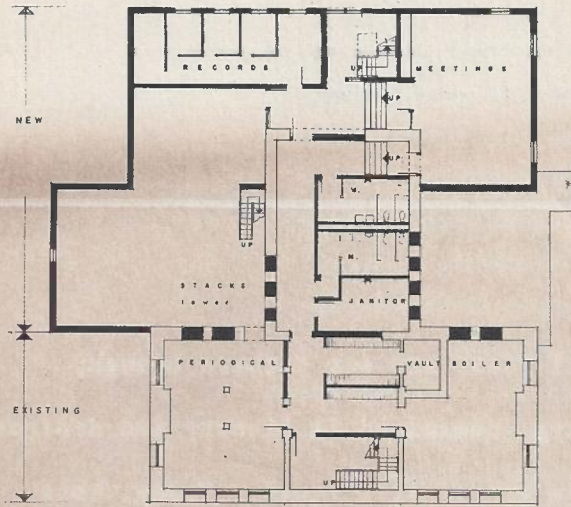
FROST PUBLIC LIBRARY

WINTHROP, MASSACHUSETTS

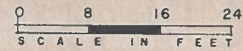
THREE SCORE AND THREE YEARS AGO our fathers brought forth in this town a new Library, conceived in Liberty and dedicated to the proposition that all men are created equal. Today, this equality of educational opportunity no longer exists. Why? BRIEFLY:

1. We have no available space for book storage.
2. There is no adequate working space for the Library Staff.
3. Our Reading Rooms can no longer accommodate the numbers of students and adults who need these services.
4. There are no toilet facilities available.
5. Inadequate exits restrict the use of the Second Floor.
6. The Frost Library was designed for 6,000 people
It now serves 20,000.

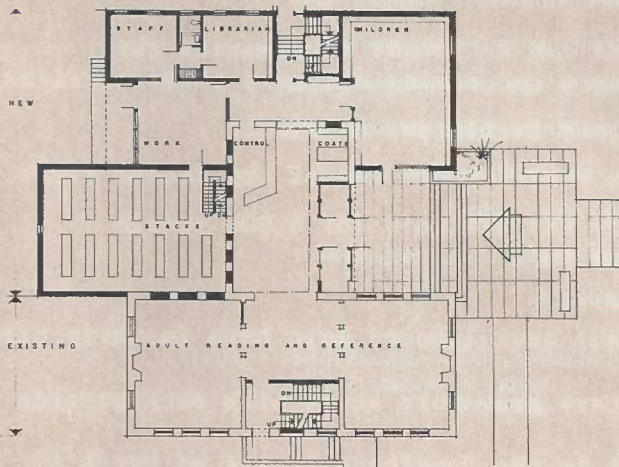
The men and women who have labored here have in their time seen the problems of the Library grow more acute with each passing year. We see the problems too, but in the Committee Report of March 19, 1956, the late Eugene Whittier said it best "We conceive it to be the duty of the community to establish and maintain the highest possible standards in pursuance of the educational and cultural interests of each child, each youth, each adult It (The Library Program) constitutes a challenge to sober thought, careful planning and positive action; not apathy, not postponement, not neglect."



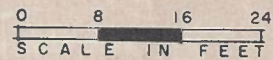
GROUND FLOOR PLAN



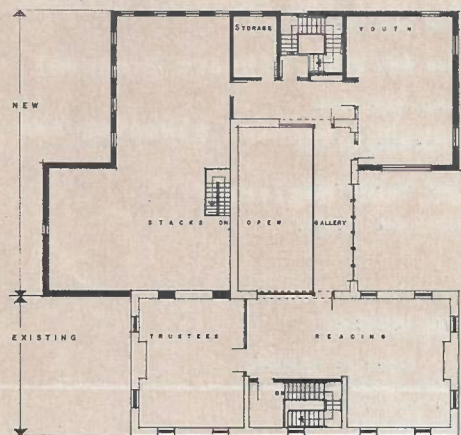
T H E S E P L A N S



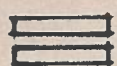
MAIN FLOOR PLAN



Y O U R V O T E



SECOND FLOOR PLAN



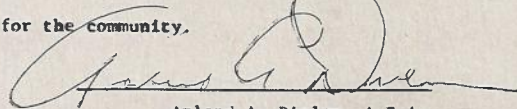
NEW EDUCATIONAL PROGRESS

The proposed addition to the Winthrop Public Library will add 12,200 square feet to the 6,300 square feet now contained in the existing building. This together with the revision of the second floor of the present structure (so that it will conform to the requirements of the Department of Public Safety and thus become available as a place of public assembly) will more than triple the efficiency and functional qualities of the existing edifice.

The architectural studies have made a very comprehensive exploration of both the existing and new addition. As the sketches reveal, they together reflect the present day standards recommended for library planning. Reading rooms, stack areas, control centers and the places for staff and maintenance have all been considered.

The connecting link between the old and new unit is expressed in a conservative manner and permits abundant light to flow into the interior. However, great concern has been given to the architectural concept of the new addition so that with the use of buff brick-similar fenestration and comparable roof lines - the total ensemble will be in complete harmony with the Town Hall and the entire Civic Center.

In my opinion, this addition will be a very functional and worthy land mark for the community.



Arland A. Dirlam, A.I.A.
Architect

It is with the unanimous approval of the Board of Trustees and the Building Committee of the Winthrop Public Library that the enclosed plans are offered to you as being the best possible solution of a complex program of library needs for the Town of Winthrop, and we feel that these plans when carried through to completion will give Winthrop a library to be proud of. These plans have been carefully worked out to utilize the present building to its fullest a substantial saving to the Town, plus an addition skillfully blended together to meet and fulfill the library needs of Winthrop for the next fifty years.

BOARD OF TRUSTEES

John M. Milne, Jr. Chairman
Caroline Belcher
Daniel Appleton
William Bennett
Harriett Stevens, Secretary
Philip Gorman, Financial Sec.

BUILDING COMMITTEE

John M. Milne, Jr. Chairman
Caroline Belcher
Daniel Appleton
Thomas Donavan
Russell Hughes
Arthur Dalrymple
Mrs. Leon Masovetsky, Secretary